

Micro™, MicroPro™ & New MicroPro Hybrid™

Advanced LED Lighting
for Video, Still Photo and
Motion Picture Production



Litepanels®

Discover Hollywood's lighting secret and benefit from the same technology that's made Litepanels an integral part of television & movie production worldwide with the first professional LED lights to run off standard AA batteries.



Litepanels LED lighting products earned an Academy of Television Arts & Sciences 2009 Primetime Emmy Award for Outstanding Achievement in Engineering Development



www.litepanels.com

Litepanels Micro™

The perfect camera light—fully dimmable & powered by AA batteries!
Use on still and video cameras



>>> The compact lighting tool for today's DSLRs & small DV camcorders, the Micro™ harnesses the company's proprietary LED technology in an ultra-lightweight fixture. Users will enjoy luminous, soft, directional lighting with the same warmth and great color characteristics that make Litepanels an integral part of television,

broadcast news & feature production. Plus it offers the convenience of running off four standard AA batteries.

> Highly Controllable

The Litepanels Micro features a conveniently located integrated dimmer dial at the top of its housing to instantly dim the light anywhere from 100% to 0, with minimal color shift. Output is flicker free, heat free and remains consistent. For additional control, an integrated filter holder allows for work with the included color/diffusion gels. Additional filters can be conveniently stored on the back of the fixture.

> Not Power Hungry

Litepanels Micro produces 1.5 hours* of continuous output from just four AA batteries (three times more efficient than a conventional tungsten camera light). What's more, it's virtually heat free so it's easy to handle. And the system can be run off of either standard or rechargeable batteries.

*7+ hours runtime using Energizer®e2 Lithium AA batteries

> Elegant Design

The compact and low-profile Litepanels Micro head is ideally suited for mounting on a mini DV or DSLR camera. Measuring just 2.9" H x 3.93" W x 1.49" D (74mm x 100mm x 38mm) the head weighs 4.3 ounces (122g). With its black matte finish and sleek design, the fixture is an unobtrusive addition to any camera.

> Upgraded Mounting Options

Litepanels Micro now comes fitted with a new detachable Ball Head Shoe Mount with 1/4-20 thread featuring an adjustable tilt mechanism and locking handle. To allow for multiple mounting configurations, it may also be mounted on the optional base plate for off-camera use.



SPECIFICATIONS

- > Compact: 2.9" H x 3.93" W x 1.49" D (74mm x 100mm x 38mm) without dimmer knob & shoe
- > Lightweight: 4.3 oz (122g). With shoe mount, no batteries
- > Power Draw: 3 watts
- > Daylight Output (cool white—5600°K)
- > Filters Included:
 - > Tungsten conversion (warm white—3200°K)
 - > ¼ Warming
 - > Diffusion
- > Output comparable to a 25W camera light

OPTIONS

- > Spare color/diffusion gels
 - > Base plate for off-camera usage
 - > DV Adapter Plate for Panasonic, Canon & Sony batteries
- Note: Handycam Shoe Adapter available at video resellers.



3 Gel Filters



Without Litepanels Micro

With Litepanels Micro

LITEPANELS MICRO PHOTOMETRICS

Distance	Footcandles	Lux
2ft./0.61m	52FC	560 Lux
4ft./1.22m	26FC	280 Lux
6ft./1.82m	6.5FC	70 Lux



MICRO & MICROPRO ADVANTAGES

- > Heat free LED technology
- > Fills in shadows
- > Brings eyes to life
- > Vastly improves skin tone
- > Dimmable 100% to 0 (min. color shift)
- > Produces bright, HD-friendly soft light
- > Runs cool
- > Flicker free light output
- > Never change a hot lamp again (50,000 hr LED life)
- > All-in-one camera light without external cables
- > Uses standard or rechargeable AA batteries

Litepanels MicroPro™

Lightweight & powerful—Double the output of the Micro

>>>> So powerful, it's proven to be a favorite of broadcasters and cinematographers alike, Litepanels MicroPro™ is the optimum LED light for shooters who use DV camcorders, DSLRs and the new breed of video enabled DSLR cameras. Offering output similar to a 50W camera light, this cool-running, power efficient, go-anywhere fixture provides double the output of the Micro, yet it is lightweight enough to rest comfortably on board your camera. For truly professional—soft, directional illumination—with the same warmth and great color quality that has made Litepanels a Hollywood mainstay, light your images with MicroPro.

> Shift free, Flicker free, Heat free

At the top of the MicroPro housing is a convenient integrated dimmer dial that puts instant 100% to 0 dimming with minimal color shift right at the operator's fingertips. Output is flicker free, heat free and remains consistent. For more versatility, an integrated filterholder allows for work with the three included color/diffusion gels. Plus, on the back there's a handy holder for the filters that are not in use.

> Power Saver

Litepanels MicroPro produces 1.5 hours of continuous output from six standard AA batteries or 5-6 hours with Energizer e2 Lithium cells. And it works just as well with rechargeables. In addition there is an optional DV Adapter Plate for Panasonic, Canon and Sony batteries. This eco-friendly lighting wonder generates almost no heat, so it's remarkably easy to handle.

> Variety of Mounting Options



Litepanels MicroPro comes equipped with a Ball Head Shoe Mount with 1/4-20 thread featuring an adjustable tilt mechanism and locking handle. To allow for multiple configurations, it may also be mounted

on the optional base plate for off-camera usage.

SPECIFICATIONS

- > Compact: 5.5" W x 3.75" H x 1.5" D (139.7mm x 95.25mm x 38.1mm) without dimmer knob & shoe
- > Lightweight: 9 oz (255g). With shoe mount, no batteries
- > Power Draw: 9 Watts
- > Six AA batteries (internal)
- > Integrated filterholder
- > 5600°K Daylight Output (cool white)
- > Filters Included: 3200°K Tungsten conversion (warm white), 1/4 warming and diffusion
- > Output comparable to a 50W camera light

OPTIONS

- > Spare color/diffusion gels
- > Base plate for off-camera usage
- > Underwater Housing
- > DV Adapter Plate for Panasonic, Canon & Sony batteries

Note: Handycam Shoe Adapter available at video resellers



Padded Carrying Bag



100%-0 Dimming Knob



Ball Head Camera Shoe



3 Gel Filters

SPECIAL BENEFITS FOR STILL CAMERAS

- > Continuous output
- > Eliminates hard-to-use flash
- > Eliminates red eye
- > Preview shot through viewfinder in real time—what you see is what you get!
- > Aids focusing in low light
- > Excellent for close-ups
- > Picture perfect control
- > Adds life and sparkle to eyes



Without Litepanels MicroPro

With Litepanels MicroPro

LITEPANELS MICROPRO PHOTOMETRICS

Distance	Footcandles	Lux
2ft./0.61m	100FC	1100 Lux
4ft./1.22m	52FC	560 Lux
6ft./1.82m	28FC	300 Lux

Specifications subject to change without notice.



New

Litepanels MicroPro Hybrid™

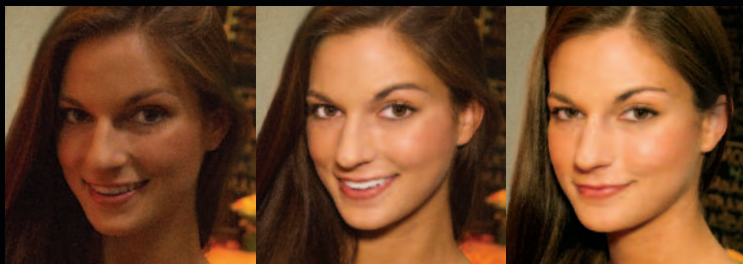
Dual Purpose: Flash and Continuous output in one fixture

>>> Discover the world's first continuous LED light combined with a "Flash" feature. This 9W fixture is the perfect complement for motion-enabled DSLR cameras. Use the "Continuous Mode" for the camera's video capability and get beautiful wrap-around soft light. Or choose the "Flash" feature to produce a 400% brighter burst—just the ticket for a variety of still images.

Litepanels MicroPro Hybrid™ runs off 6 standard AA batteries. These daylight on-camera fixtures harness the company's proprietary LED technology in a lightweight, compact design to produce luminous, soft, light with the same warmth and great color characteristics that make Litepanels an integral part of television, broadcast news, motion pictures & still photo shoots worldwide.

> Shift free, Flicker free, Heat free

At the top of the MicroPro Hybrid housing is a convenient integrated dimmer dial that puts instant 100% to 0 dimming with minimal color shift right at the operator's fingertips. Output is flicker free, heat free and remains consistent. It runs cool, so it's remarkably easy to handle. For more versatility, an integrated filter holder allows for work with the three included color/diffusion gels. A filter holder on the back of the unit allows for carrying extra gels. To enable the strobe function simply plug in the included Strobe Sync Cable.



WITHOUT MicroPro Hybrid

WITH MicroPro Hybrid Continuous

WITH MicroPro Hybrid 4x Flash

> Power Saver

Litepanels MicroPro Hybrid produces 1.5 hours of continuous output from 6 AA batteries or 5-6 hours from Energizer e2 Lithium cells. It also runs off rechargeable batteries.

> DV/DSLR-Friendly Design

The compact, low-profile MicroPro Hybrid is ideally suited for mounting on a DV or DSLR camera. At 5.5" W x 3.75" H x 1.5" D (139.7mm x 95.25mm x 38.1mm), the head weighs just 10.5 ounces (300g). With a smart black finish and sleek design, it's a professional-looking addition to any camera.

> Variety of Mounting Options

Litepanels MicroPro Hybrid comes equipped with a Ball Head Shoe Mount with 1/4-20 thread featuring an adjustable tilt mechanism and locking handle. To allow for multiple configurations, it may also be mounted on the optional base plate for off-camera usage.

**TWO MODES:
Continuous
or
4x Flash**



HYBRID PHOTOMETRICS—CONTINUOUS

Distance	Footcandles	Lux
2ft./0.61m	100FC	1100 Lux
4ft./1.22m	52FC	560 Lux
6ft./1.82m	28FC	300 Lux

HYBRID EXPOSURE GUIDE—FLASH MODE

Rating/ISO	Distance	Shutter	F-Stop
200	2ft./0.61m	1/100th	4.4
200	4ft./1.22m	1/100th	2.4
200	6ft./1.82m	1/100th	1.4

Includes padded carrying bag



SPECIFICATIONS

- > Size: 5.5" W x 3.75" H x 1.5" D (139.7mm x 95.25mm x 38.1mm) w/o shoe
- > Weight: 10.5 oz (300g)
- > Power Draw: 9 Watts
- > 6 AA batteries (internal)
- > Integrated filterholder
- > 5600°K Daylight Output (cool white)
- > Filters Included: 3200°K Tungsten conversion (warm white), 1/4 warming and diffusion
- > Equivalent Wattage: Approximately 50W
- > PC Sync Cable

MICROPRO HYBRID ADVANTAGES

- > Heat free LED technology
- > Produces bright, HD-friendly soft light
- > Integrated dimmer 100% to 0
- > All in one with Strobe Sync Cable
- > Absolutely flicker free light output
- > Runs 1.5 hrs. on 6 AA HD Alkaline batteries, or 5-6 hours on Energizer e2 Lithium cells
- > Uses standard or rechargeable batteries
- > Lightweight and compact
- > 50,000+ hours of LED life

OPTIONS

- > Spare color/diffusion gels
- > Base plate for off-camera usage
- > Underwater Housing

Printed in the USA, L.P. MicroSeries Broch 9/10 GCA 15x + 10x.fm

Distributed in
US, France, UK, Italy, Germany, & Austria
by Manfrotto Distribution

www.manfrottodistribution.com



**LITE
PANELS®**

www.litepanels.com

Phone: +1 818 752 7009 • Fax: +1 818 752 2437

E-Mail: info@litepanels.com



Litepanels®
A Vitec Group brand