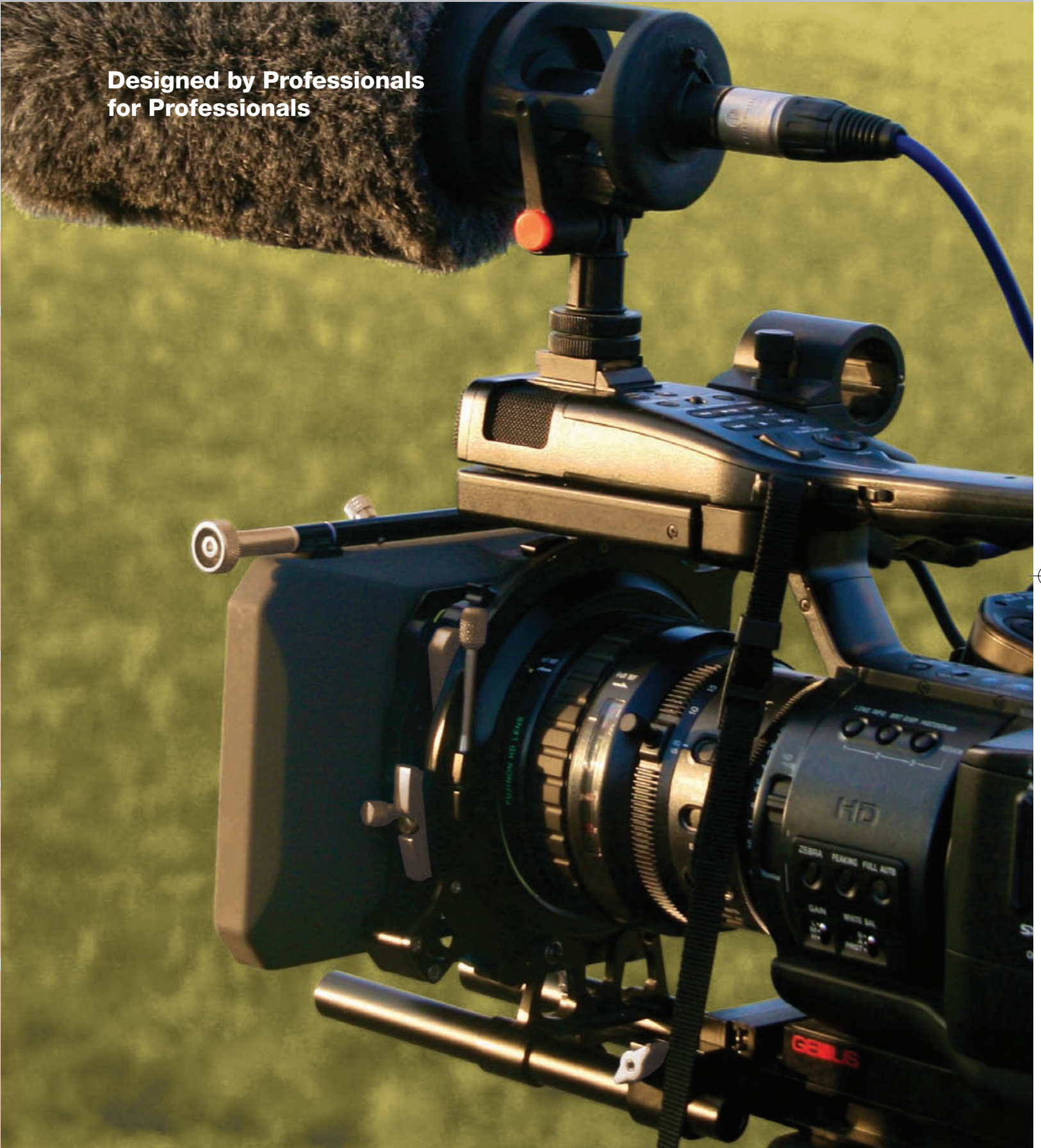


GENUS

www.genus-tech.us

**Designed by Professionals
for Professionals**



GENUS

www.genus-tech.us

Genus creates innovative products for the video and photography professional. Discover our full range of Matte Boxes, Shoulder Mounts, Sunshades, Viewfinders and Filters.

Sunshade

- Clips onto your lens and fastens with ease
- Fits a large range of lenses, both standard and wide
- Has a lockable filter holder that will rotate 360 degrees
- Selection of screw in adapter rings to fit lenses up to 82mm diameter
- Wide Rayshade to accommodate wide-angle lenses



GL GSS

Genus Matte Box

- Clips onto your lens and fastens with ease
- Wide rayshade to accommodate wide-angle lenses
- Fits a large range of lenses, both standard and wide
- Two filter trays; one wide and one standard 360° rotatable
- Clamp ring caters to lenses and wide angle adapters up to 105mm
- A Do-Nut adapter ring ensures a snug fit between the lens adapter ring and the clamp ring of the matte box
- A selection of screw-in adapters rings to fit 37mm – 82mm lenses are available



GL GWMC

Matte Box Basic Kit

- French Flag added to Wide Angle Matte Box
- Gives better level of light control
- Specify lens size for adapter ring



GL GMKBAS

Matte Box DSLR Kit

- Adapter Bar System for DSLR (GMB/DSLR) added to Basic Matte Box Kit
- Designed with the DSLR camera in mind
- You can maneuver your mounted camera horizontally and vertically for perfect alignment
- The high base plate can accommodate additional accessories to your camera
- Retracts to a compact size when not in use



GL GMKDSL

Matte Box Superior Kit for Video Cameras

- Adapter Bar System (GMB/A) for video cameras added to the Matte Box Basic Kit
- You can move your mounted camera horizontally and vertically for perfect alignment
- Back plate and bars can be extended for any camcorder/lens size
- Retracts to compact size when not in use
- Specify lens size for adapter ring

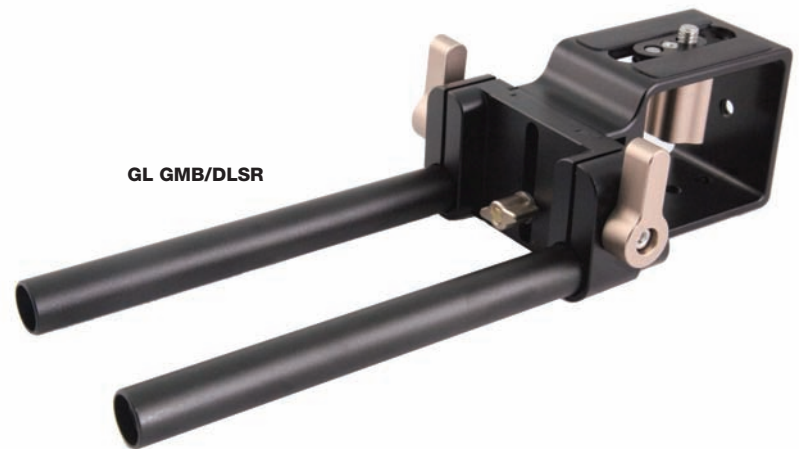


GL GMKSUP



Adapter Bars System for DSLR Cameras

- High base plate to accommodate the addition of external accessories to your camera
- Variable positioning with vertical & horizontal brace for perfect alignment
- Retracts to a compact size when not in use
- Easy-grip turn knobs that tighten and loosen gently
- Bars can be elongated by attaching extra bars into the specially designed threaded cores



GL GMB/DLSR

Advanced Adapter Bar System

- Backplate & Bars can be extended for longer camcorder / lens reach
- Backplate slides out completely for easy attachment to your camera / camcorder
- Variable positioning with vertical & horizontal brace for perfect alignment
- Retracts to a compact size when not in use
- Non-slip rubber strips on the backplate prevents movement & damage to your camcorder



GL GMB/A

Adapter Plate

- The GAP adapter plate clips onto Sony V mount tripod
- This camera base plate adapter allows small camcorders to be easily attached to Sony VCT-14 camera base plates
- Great for use on remote camera heads



GL GAP

GMB/P Genus Professional Bar System.

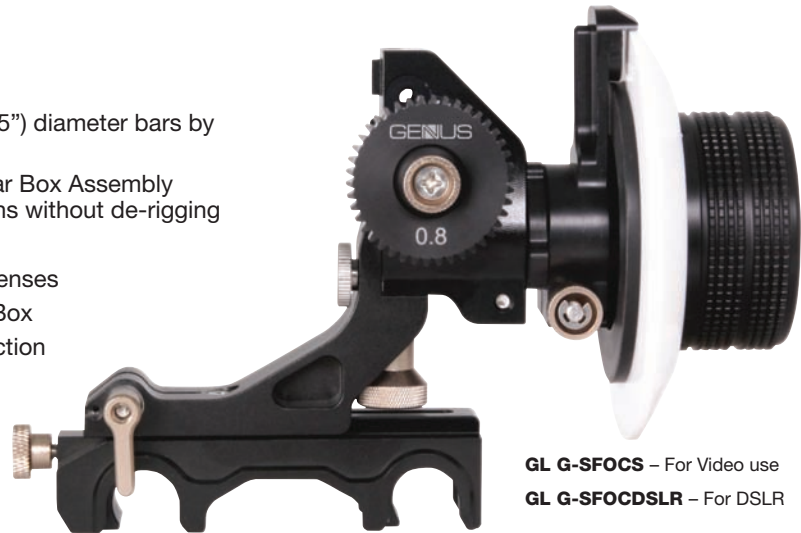
- Professional Adaptor Bars System (GMB/P) is specifically designed to cater to the ENG camera market.
- Clicking snugly and securely onto a Sony V-mount plate or its equivalent, the GMB/P serves the dual function of a bar system as well as a camera adaptor plate.
- The GMB/P comes supplied with 215mm support bars which can be removed when not in use, leaving the plate attached to the underside of the camera.



GMB/P

Superior Follow Focus

- Ultra-smooth action when adjusting focus
- Snap-On Bar quick release system, 15mm (3/5") diameter bars by 60mm (2 2/5") spacing
- Sliding Bracket, moving the Follow Focus Gear Box Assembly away from the lens, enables you to change lens without de-rigging
- Flippable Gear-Box action for Nikor lenses
- Reversible Pitch Gear action for short length lenses
- Backlash elimination system within the Gear-Box
- High specification aluminum & acetal construction
- Stainless steel fixings
- Full range of Pitch Gears
- Flexible Belt Gear option available
- Standard 12mm (1/2") whip drive aperture
- 360 degree adjustable
- Positive Drag Pressure
- Beveled / 3D marking disc means the operator can shoot and see the focus mark. Especially handy for the DSLR camera videographer



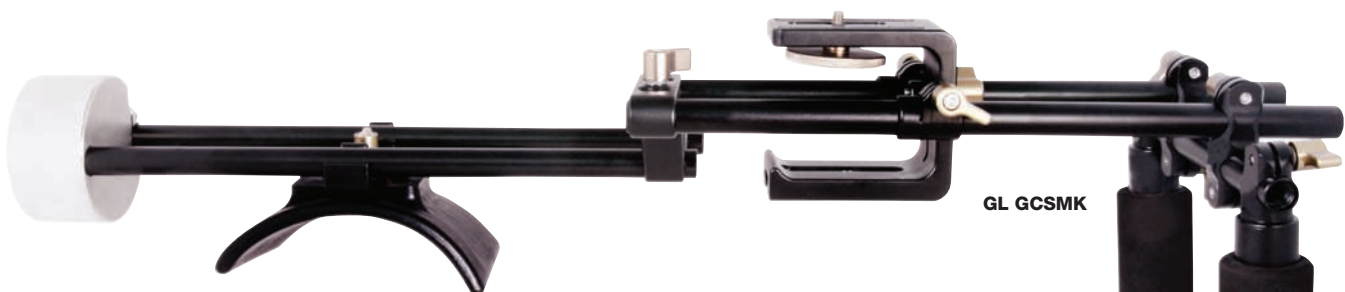
GL G-SFOCS – For Video use
GL G-SFOCDSLR – For DSLR

Bravo Follow Focus

- Ultra-smooth action when adjusting focus
- Sliding Bracket, moving the Follow Focus Gear Box Assembly away from the lens, enables you to change lens without de-rigging
- Reversible Pitch Gear action for short length lenses
- Backlash elimination system within the Gear-Box
- High specification aluminum & acetal construction
- Stainless steel fixings
- Flexible Belt Gear option available
- Standard 12mm (1/2") whip drive aperture
- 360 degree adjustable
- Positive Drag Pressure
- Beveled / 3D marking disc means the operator can shoot and see the focus mark. Especially handy for the DSLR camera videographer



GL G-BFOCS



GL GCSMK

Shoulder Mount System

- Versatile and Modular System enables you to build the rig to suit you and your camera
- Comes as a "Kit" or in individual components so you can have exactly what you need
- Quick and easy to assemble / disassemble
- Camera Mount Bracket has adjustable vertical bracket for DSLR cameras
- The counterweight is not in the shoulder weight, therefore giving your shoulder the true pivot point and making balance easier



Loupe Viewfinder

- The Genus Loupe Viewfinder is the ultimate tool for use with 3-inch LCD screens
- With a 2.5X magnifying lens you clearly see your images on a larger scale
- Easy to install and adjust
- The Genus Loupe Viewfinder Kit comes with one black hood, one translucent hood, a mounting frame, magnifying lens and a lanyard





GL GARD-NK

Nuns Knickers

- Snug Fit for Donut Ring
- Tough Fabric Sleeve
- Flexible Material for Easy Handling
- Elasticated for Use with Different Lenses
- Prevents Light Leaks
- Easy to Install
- Lightweight and Compact



GL GVISTA

Porro Viewfinder

- Lightweight construction
- Easy attachment LCD mount frame
- Two viewfinders: one for landscape (horizontal) shooting and one for portrait (vertical) shooting
- Viewfinders attach to the mount frame by velcro, making it easy to interchange between viewfinders
- Changes from low level to above-head shooting just by turning the viewfinder around 180°
- Can easily be converted into a sunshade simply by lifting and sliding the moveable flap
- Set comes with two velcro LCD mount frames
- Packs away into handy protective boxes



GNDF

GNDF Genus Neutral Density Fader

- The Genus ND Fader is a compact all-in-one variable neutral density fader filter that has up to 4 stops of light reduction.
- Giving you clear and precise shots at whichever density you are using. The GNDF screws in beautifully onto your lens and is an invaluable tool to enhance your images.
- Available in diameters of 52mm, 58mm, 62mm, 67mm, 72mm, 77mm & 82mm
- The front diameter glass element is wider to reduce the risk of clipping and vignetting.
- Each ND fader comes with a handle, and dust cloth & it's one case.